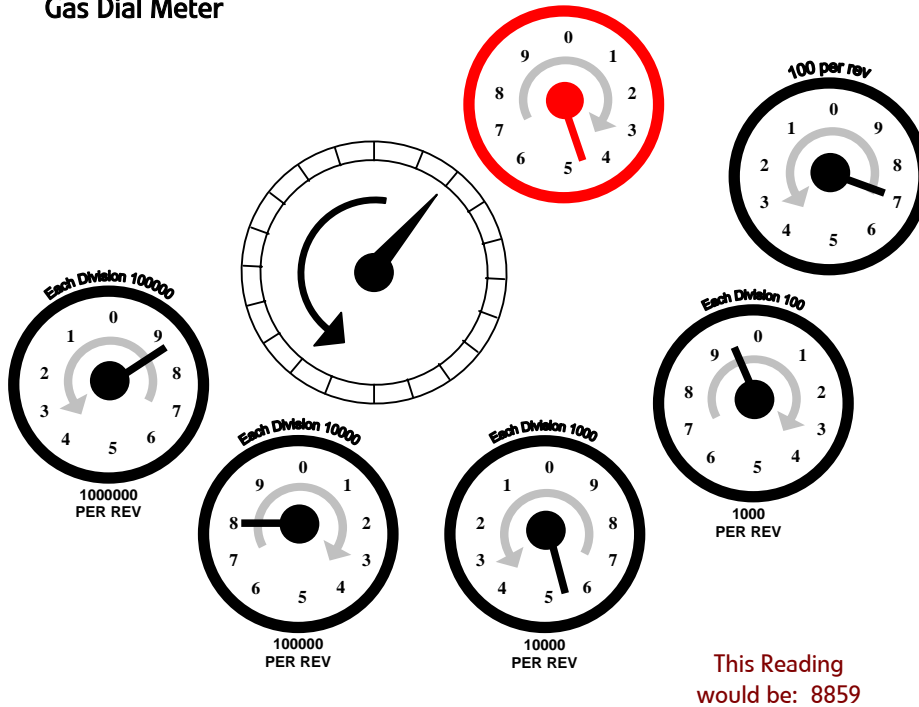


HOW TO READ YOUR METERS

How to Read Gas & Electricity Meters

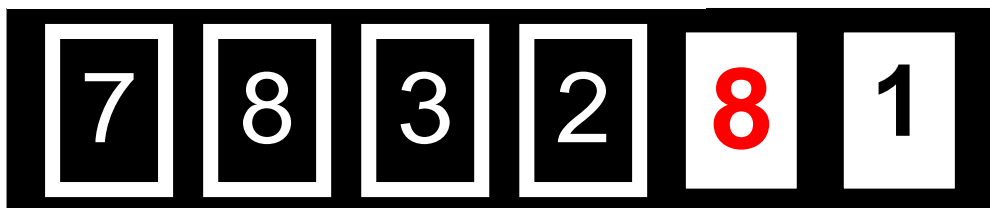
Gas Dial Meter



When reading your Gas Dial Meter, please be aware of the following:

- Dials next to each other revolve in different directions
- If the pointer is between 2 numbers, choose the lowest number of the two
- If the pointer is between 9 and 0, 9 is the lowest number as 0 is the start of the next revolution
- Ignore the dials marked 100 per rev, any red dials and the large dial.
- Read the dials from left to right.

Gas Digital Meter (Imperial Meter)



When reading your Gas Digital Meter, please be aware:

- Ignore any numbers in red
- Ignore any numbers after a decimal point
- Use only the white digits

This Reading would be: 7832

HOW TO READ YOUR METERS

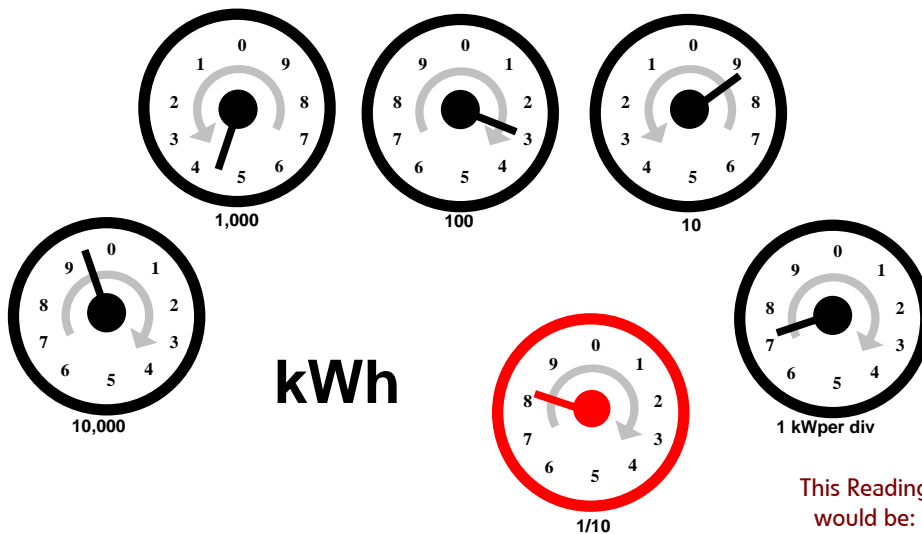
5 Digit Digital Meter



This Reading
would be: 85965

To read your Gas 5 Digit Digital meter, use only the first five numbers.

Electric Dial



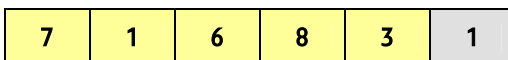
This Reading
would be:
94387

When reading your Electric Dial Meter, please be aware of the following

- Read the five black dials from left to right
- Dials next to each other move in the opposite direction
- If the pointer falls in between numbers, always note the lower number
- If your pointer is between 9 and 0, 9 is the lower number
- Ignore any Red Dials

Single Rate Digital Meter

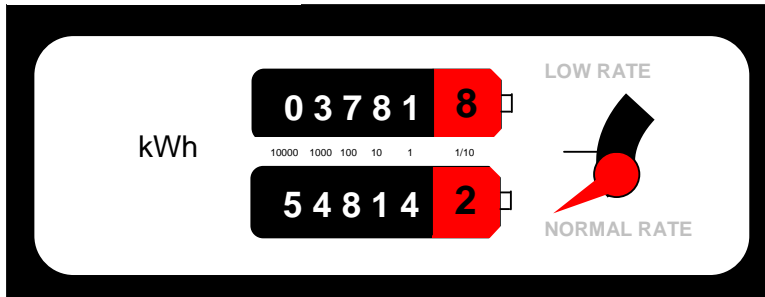
This Reading
would be: 71683



Read the numbers from left to right, ignoring the final digit.

HOW TO READ YOUR METERS

Economy 7 Meter



Read the numbers from left to right ignoring the very last digit.

In this example, Low Rate would be:	03781	In this example, Normal Rate would be:	54814
--	--------------	---	--------------

Electronic Meter



This Reading
would be: 55868

Electronic Meters could be for 2 systems, Economy 7 or SuperDeal/Flexiheat. Ignore the Red button. Press the blue button to change the screen display to show what you want. Ignore anything after the decimal point. The following table details which menu number you want to what data:

Economy 7	Display	SuperDeal/ Flexiheat
	Normal Display shows Total Units	
	Heat Units	1
1	Test Display (shows system is working)	2
2	The Time	3
3	The Date	4
4	Rate 1 – Day Units	5
5	Rate 2 – Night Units	6
6	Total Number of Day and Night Units	7
	Heat Units	8
7	Display returns to normal display	9