

Make the most of your Smart meter



Please use this information to get to know your Smart meter – and keep it handy for future reference.

How does my Smart meter work?

Your Smart meter uses revolutionary technology to automatically transmit remote* meter readings directly to us. We then apply these readings to your account and send you an accurate bill**.

How does this benefit your business?

With accurate and up-to-date bills, you can manage your energy consumption more effectively - and so make some real cost and energy savings. Your business will also benefit from:

Reduced administration

- No need to arrange access to your business premises for meter readings
- Avoid unnecessary calls to query estimated invoices

Better cost control

- Only pay for the electricity you use
- Automated, not estimated, meter readings mean manual meter-reading errors are avoided

Greater understanding of energy use

- A more accurate, up-to-date view of your consumption means you can forecast and allocate your budgets more accurately
- Through additional services, you can monitor and analyse your energy use patterns

*Site visits are still necessary for meter safety checks.

**For reasons beyond our control we may occasionally need to send an estimated bill.

How do I use my Smart Meter?

You can check your meter readings whenever you want. Simply follow the guides below.

EDMI Mk 10

This is the make and model of your Smart meter.

The arrow on your Smart meter screen shows your current rate. The number of rates on your screen will match the rates shown on your bills.



This button was sealed when your Smart meter was installed. Please don't break the seal. The Smart meter maintenance engineer will use the button to access information and functions.

You can press this button to check your Smart meter settings, such as date and time, and your current meter reading(s).
This is the optical port, which is used by the Smart meter maintenance engineer to access information and functions.

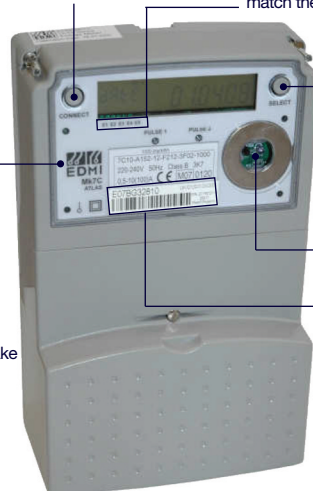
The pulsing lights show how much energy your business is currently using. The pulse speed increases along with your energy use.

Your unique Smart meter serial number will be shown on your bills.

EDMI Mk 7c

This button was sealed when your Smart meter was installed. Please don't break the seal. The Smart meter maintenance engineer will use the button to access information and functions.

The arrow on your Smart meter screen shows your current rate. The number of rates on your screen will match the rates shown on your bills.



You can press this button to check your Smart meter settings, such as date and time, and your current meter reading(s).

This is the optical port, which is used by the Smart meter maintenance engineer to access information and functions.

Your unique Smart meter serial number will be shown on your bills.

This is the make and model of your Smart meter.

Access to Display Screens

Access to all the features of the meter only requires the pushing of a single 'select' button on the meter. The meter has two main displays called 'Set A' and 'Set B'.

Set A contains the main User displays whilst Set B contains test/supplementary information.

To move from 'Set A' to 'Set B' you simply press and hold the 'display' button for approximately 2 seconds.

- The meter itself is normally set to automatically cycle through the 'Set A' LCD displays to show individual items approximately every 10 seconds.
- You can force it to go to the display item you want within the 'Set' by simply pressing the 'select' button once and the display will advance one step. Continual individual presses of the button will eventually cycle the display back to your starting point.

BES Commercial Electricity Ltd.

Registered Office:
Parkside Stand,
Fleetwood Town Football Club,
Park Avenue, Fleetwood
FY7 6TX

Email: customer.services@besutilities.co.uk
Website: www.beselectricity.co.uk

Customer Service: 0844 5678 427
Fax: 0844 5678 428



Registered In England company No.06882734